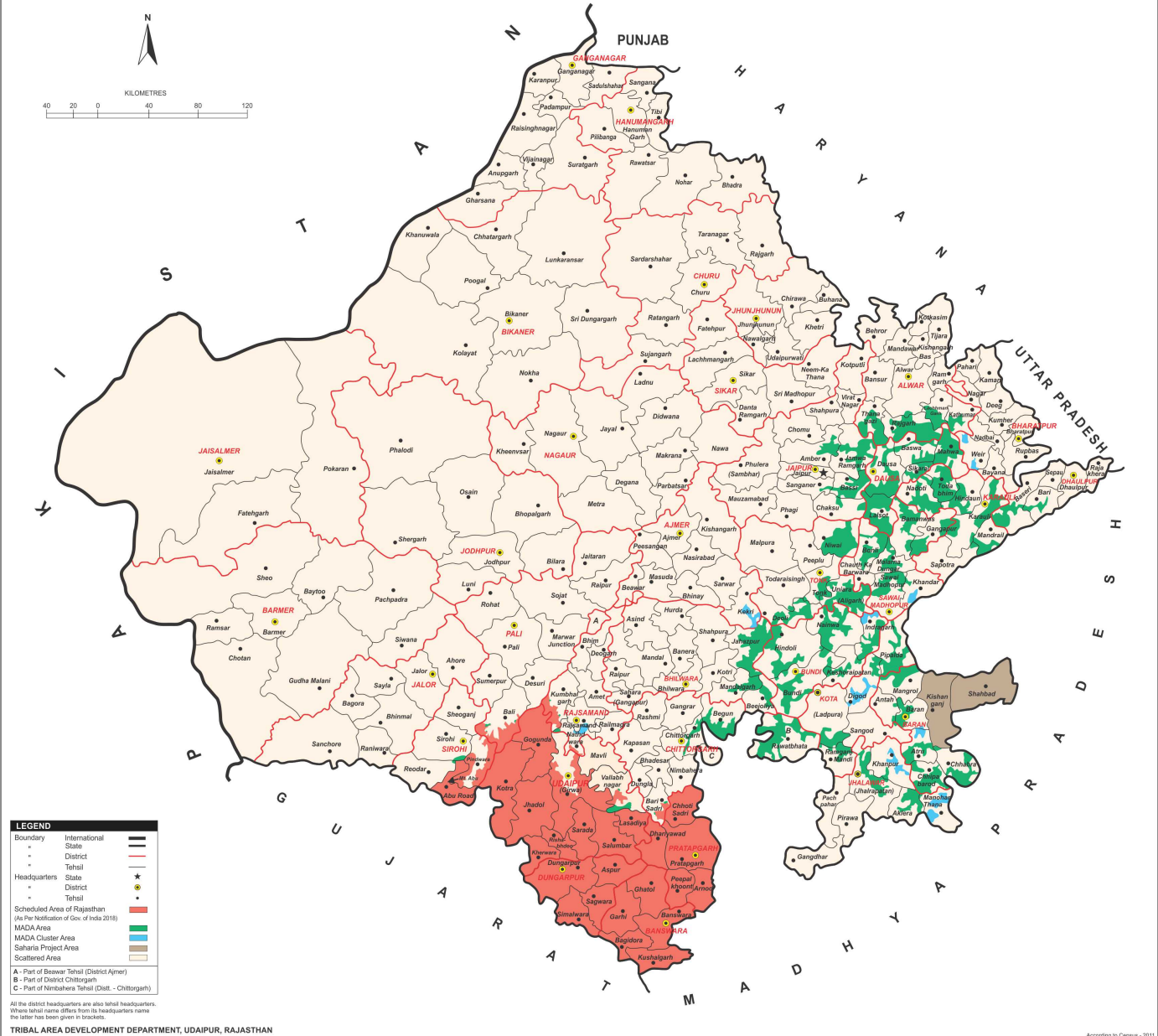
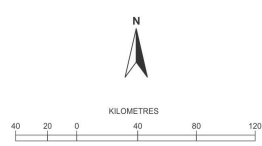


# RAJASTHAN TRIBAL SUB PLAN AREA



**LEGEND**

—	International Boundary
—	State Boundary
- - -	District Boundary
—	Tehsil Boundary
★	State Headquarters
●	District Headquarters
●	Tehsil Headquarters
■	Scheduled Area of Rajasthan (As Per Notification of Gov. of India 2013)
■	MADA Area
■	MADA Cluster Area
■	Saharia Project Area
■	Scattered Area

A - Part of Beawer Tehsil (District Ajmer)  
 B - Part of District Chittorgarh  
 C - Part of Nimahera Tehsil (Distt. - Chittorgarh)

All the district headquarters are also tehsil headquarters. Where tehsil name differs from its headquarters name the latter has been given in brackets.